



**ALASKA DIVISION OF HOMELAND SECURITY &
EMERGENCY MANAGEMENT**



SITUATION REPORT 22-307 • NOVEMBER 03, 2022

Toll-Free 1.800.478.2337

Anchorage Area 907.428.7000

SEOC 907.428.7100

<p><u>SEOC Preparedness Level</u> Level 2 – Heightened Awareness</p>	<p>http://ready.alaska.gov</p>	<p><u>National Terrorism Advisory System:</u> Read the NTAS Bulletin here</p>
<p><u>Maritime Security (MARSEC)</u> Level:1-Minimum Appropriate Security Measures</p>	<p>WHO Novel Coronavirus Pandemic (COVID-19): 2019 Novel Coronavirus</p>	<p><u>Alaska Military Installation Force Protection Level:</u> FPCON Bravo</p>

(Significant changes from previous situation reports are in red.)

Significant Issues:

Major Coastal Sea Storms

Overall incident operations for the 2022 September West Coast Storm (DR-4672) disaster have transitioned from response in the SEOC to recovery coordinated through the State/FEMA Joint Field Office (JFO). Mass care operations will continue to be coordinated through the SEOC through November 11th and then transition to the JFO for long-term and occasional Mass Care support for feeding and interim housing identification.

State of Alaska Department of Health (DOH)

The DOH is leading the State of Alaska COVID-19 Recovery, supported by the SEOC and other state departments as required.

For current COVID-19 information, see:

<https://covid19.alaska.gov/>

<https://www.cdc.gov/coronavirus/2019-ncov/index.html>

NTAS Bulletin

To read current or expired advisories, click the link below:

<https://www.dhs.gov/national-terrorism-advisory-system>

Travel Alerts and Conditions

For current driving conditions dial 511 or link to <https://511.alaska.gov/>

Barry Arm Landslide / Tsunami Risk

For the latest information on the Barry Arm Landslide and Tsunami risk, click here:

[DGGs Barry Arm Landslide and Tsunami Hazard](#)

Recent Earthquakes

USGS Earthquake Information: <http://earthquake.usgs.gov/>

National Tsunami Warning Center: <http://tsunami.gov/>

Alaska Volcanoes

Great Sitkin Alert Level: **Watch** and Aviation Color Code: **Orange**

Cleveland Alert Level: **Advisory** and Aviation Color Code: **Yellow**

Pavlof Alert Level: **Watch** and Aviation Color Code: **Orange**

Semisopchnoi Alert Level: **Advisory** and Aviation Color Code: **Yellow**

For Alaska Volcano updates, go to: <https://www.avo.alaska.edu/>

Air Quality Index (AQI) Advisories

For the most up to date Air Quality Index Advisories:

<http://dec.alaska.gov/Applications/Air/airtoolsweb/Home/Index>

Spills of Oil and Hazardous Substances

The ADEC Spill Prevention and Response page is located at:

<http://dec.alaska.gov/spar/ppr/spill-information/response/>

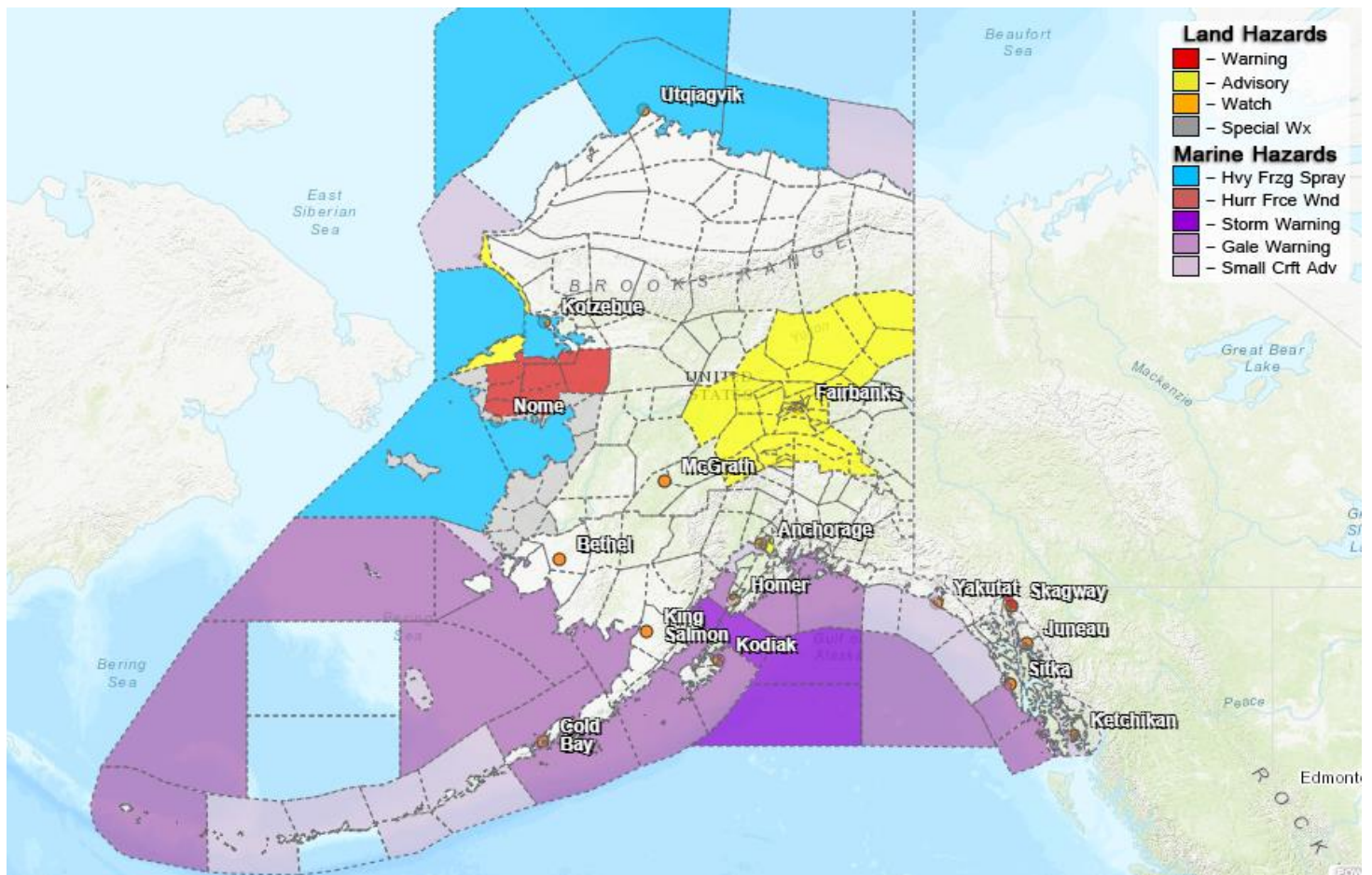
Alaska Cyber Security Information

State Employees may sign up for cyber security notifications and alerts at

<https://oit.alaska.gov/security>

CISA-Cybersecurity Services and Tools: www.cisa.gov/free-cybersecurity-services-and-tools

Significant Weather:



Winter Storm Warnings have been issued for the following areas:

- Northern and Interior Seward Peninsula until 7:00 A.M. tomorrow. Up to 8 inches of heavy snow accumulation is expected.
- Skagway until 10:00 A.M. today. Up to 3 inches of snow accumulation is expected this morning along the Klondike Highway.

Winter Weather Advisories remain in effect for the following areas:

- Chukchi Sea Coast until 7:00 A.M. tomorrow. 2 to 8 inches of snow and winds gusting to 40mph.
- Central Interior, Middle Tanana Valley and the Yukon Flats until 10:00 P.M. today. An additional 2 to 4 inches of snow accumulation is possible.
- Deltana and Tanana Flats, Denali and the Eastern Alaska Range until noon tomorrow. An additional 5 to 7 inches of snow accumulation is possible.
- Anchorage until 10:00 P.M. today. 3 to 5 inches of snow across Anchorage with an additional 6 to 9 inches of snow for the Anchorage hillside and Eagle River.

A High Surf Advisory is in effect until noon tomorrow for the Chukchi Sea Coast near Shishmaref. Northwest winds of up to 35mph may cause high surf and beach erosion.

For more information and the most current weather, Watches / Warnings / Advisories go to:

<http://www.weather.gov/arh>.

Avalanche Forecast:



Check the Avalanche Forecast Center closest to your area for the most up to date information on avalanche potential. <https://alaskasnow.org> or <https://www.weather.gov/afc/avalancheweather>

The Next Situation Report: will be 04 November 2022. A significant change in the situation or the threat level will prompt an interim report. This report is posted on the internet at <https://ready.alaska.gov/sitrep>.

To register for email distribution, go to <http://list.state.ak.us/mailman/listinfo/dhsem.situation.report>. Direct questions regarding this report to the SEOC at 907-428-7100 or seoc@alaska.gov